

15.4.2. H14 (Indoor Intake Air Temperature Sensor Abnormality)

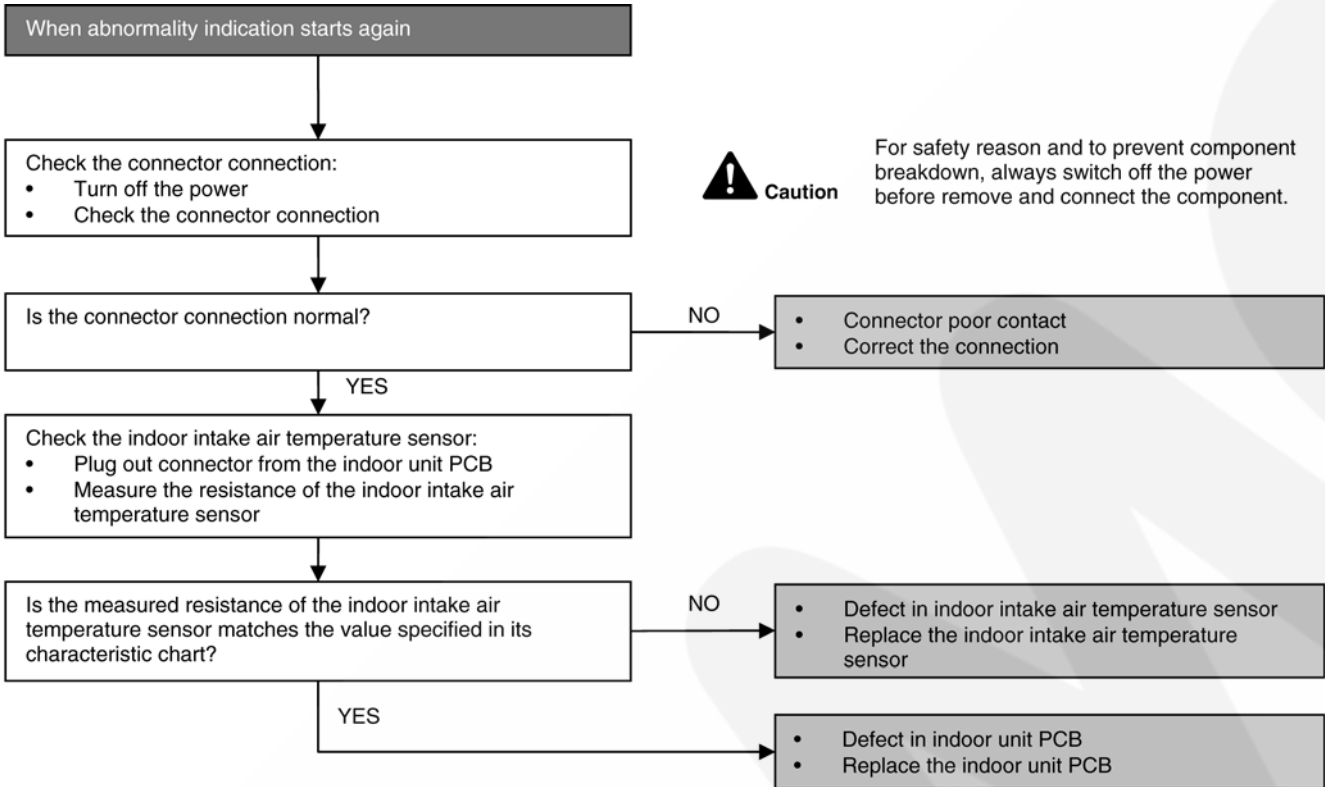
Malfunction Decision Conditions

During startup and operation of cooling and heating, the temperatures detected by the indoor intake air temperature sensor are used to determine sensor errors.

Malfunction Caused

- Faulty connector connection.
- Faulty sensor.
- Faulty PCB.

Troubleshooting



Caution

For safety reason and to prevent component breakdown, always switch off the power before remove and connect the component.

